

# CBMNET TAKING STOCK & REACHING CAREER GOALS

JANE SIMM,  
CAREER ADVISERS FOR RESEARCHERS,

[J.M.SIMM@SHEFFIELD.AC.UK](mailto:J.M.SIMM@SHEFFIELD.AC.UK)

UNIVERSITY OF SHEFFIELD



The  
University  
Of  
Sheffield.



# CAREER DEVELOPMENT ON DAY 2

- Key IB Sectors for the UK, Skills Gap & Job opportunities
- Science & Training opportunities
- My career in academia - The Good , the Bad and the Ugly
- From academia to industry
- Starting Your own Bioscience Company

- Communicating Science and Creating Impact
- Working with the Media
- Writing Funding Applications and Business Plans

- \* Getting your CV right the first time and demonstrating your strengths for career progression
- \* Taking Stock & Reaching Your Career Goals

# WHAT DO PHDS DO?

PhD

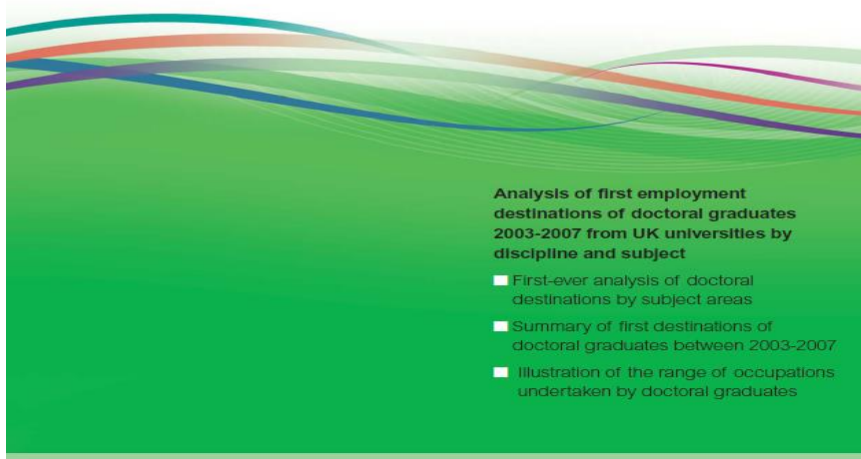
Research/teaching  
careers  
in academia  
& academic related/  
Professional service  
/academic related  
roles

Research careers  
in another  
setting  
eg industry

Any discipline  
options  
using  
'transferable  
skills'

## What do researchers do?

First destinations of doctoral graduates by subject



Vitae is supported by Research Councils UK (RCUK), managed by CRAC: The Career Development Organisation and delivered in partnership with regional Hub host universities

WHAT DO  
RESEARCHERS DO?  
FIRST DESTINATIONS  
OF DOCTORAL  
GRADUATES BY  
SUBJECT ( SEE ALSO  
CAREER PROFILES)

# Career management strategy for researchers



## Understanding Yourself

- What you have to offer an employer
- What do you want 'careerwise'

## Investigating Your Options

- Requirements of certain occupations both within /outside academia

## Researching the market for careers inside and outside academia

- Changing labour market in UK & beyond

## Sources of Vacancies

- Are many and varied. NB there may be deadlines set by employers

## Creative Job Hunting including social media

- Why wait for jobs to be advertised. Develop your networks/collaborations

## Selection Techniques used by Employers

- CVs, Application forms/Interviews/Assessment Centres

# The career-wise researcher



Develop your career management skills and get the right job for you...



Jane Simm, Philippa Storer and Heather Pateman

[www.vitae.ac.uk/researcherbooklets](http://www.vitae.ac.uk/researcherbooklets)

# SWOT ANALYSIS OF YOUR CAREER

Your **S**trengths?



Your **W**eaknesses?



**O**pportunities that interest you?



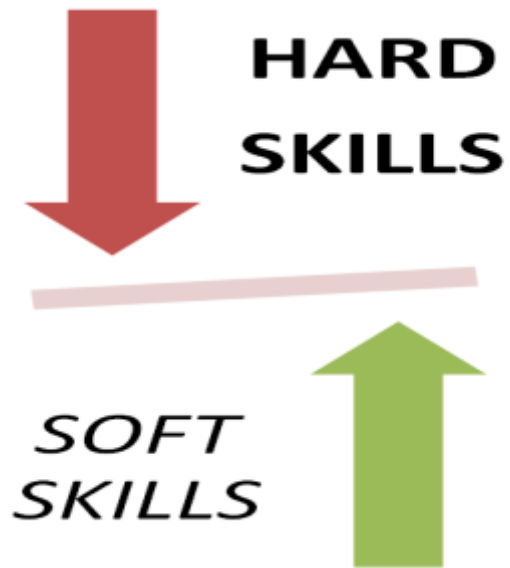
**T**hreats – what could stop you?



# WHAT SKILLS HAVE YOU GAINED OR ARE DEVELOPING DURING YOUR RESEARCH CAREER?

What skills do you bring to your research?

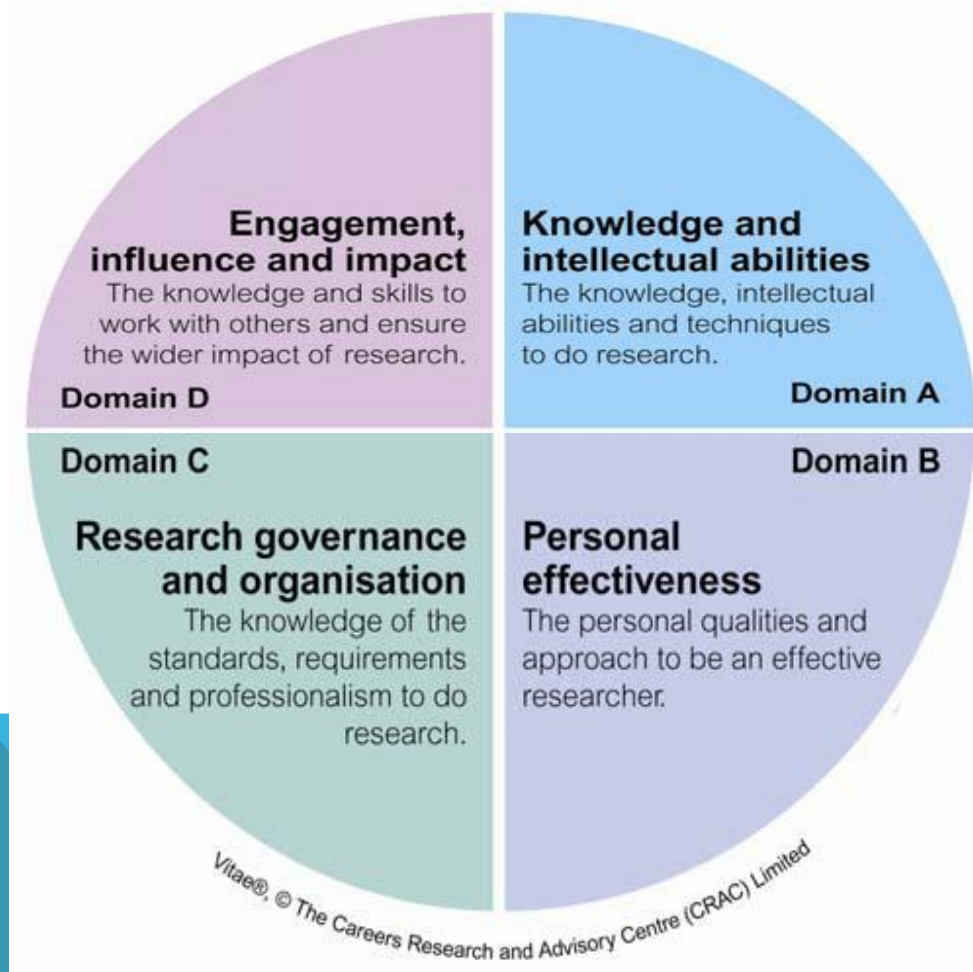
What skills do you need to enter your chosen career?





# RESEARCHER DEVELOPMENT FRAMEWORK

[WWW.VITAE.AC.UK](http://www.vitae.ac.uk)



# VITAE SURVEY (2009) – HOW DO YOU THINK THE EMPLOYERS RANKED RESEARCHERS?

1. Project Management
2. Leadership
3. Drive and Motivation
4. Commercial Awareness
5. Data Analysis
6. Problem Solving
7. Interpersonal Skills



# VITAE SURVEY (2009) – HOW EMPLOYERS ACTUALLY RANKED RESEARCHERS

1. Data Analysis
2. Problem Solving
3. Drive and Motivation
4. Project Management
5. Interpersonal Skills
6. Leadership
7. Commercial Awareness



# RESEARCHING ACADEMIC CAREERS

[www.vitae.ac.uk](http://www.vitae.ac.uk)

[www.academiccareer.manchester.ac.uk](http://www.academiccareer.manchester.ac.uk)

Or access via Careers Service website – [www.sheffield.ac.uk/careers](http://www.sheffield.ac.uk/careers)

**Supervisors/research community**



# Contents of 'An academic career'

- Is an academic career for you? Includes a self assessment guide
- About academic careers, including who are the employers
- Finding jobs in and outside the UK
- Making applications
- Interviews and assessments

# PLANNING YOUR CAREER OUTSIDE ACADEMIA: KEY QUESTIONS

1. What opportunities are available?
2. What jobs would suit my skills, interests, personality, personal values?
3. What skills do I wish to use in my career?
4. Where do the skills gained during my PhD fit in?
5. Am I willing to retrain?
6. How do I get the job that I want?



The  
University  
Of  
Sheffield.

Careers  
Service.

# A new way to connect with your Careers Service.

Use **Career Connect** to search for jobs, sign up for events and send queries to your Careers Service.  
Find it in your MUSE services now.

*It's your career, connected.*

# ACTION PLANNING POSTCARDS

